

## CAP POSITIONING CHALLENGES

*Customer is required to insert a cap with an angled mounting base onto a container. The top of the cap when transported sits at an angle. However, the cap needs to sit flat/horizontal when presented to the cap chuck for pick-up and placement on the container. Positioning of the cap relative to the container must be precise and is critical to properly sealing the cap to the container.*

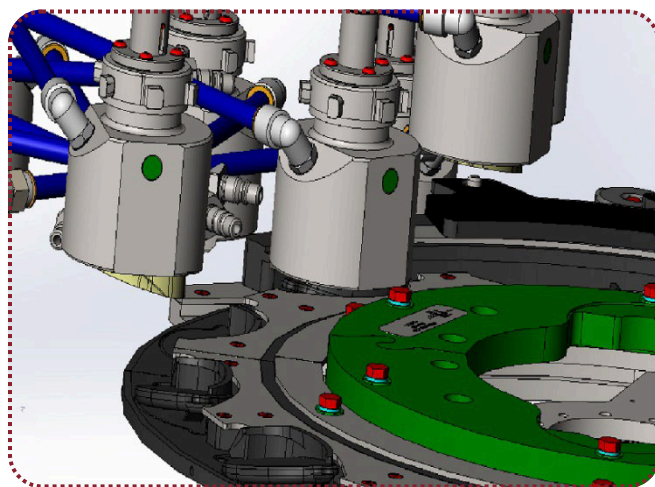
### Customer at a Glance

The customer, a large multinational personal care products manufacturer, faced unique packaging challenges due to their visually appealing designs. Before approaching Septimatech, other OEM and other cap-handling specialists the Customer had approached, declined the project due to its complexity and uncertainty of success.

### Septimatech Solution

Septimatech engineered a vacuum cap chuck and dynamic cap pick-up star.

- The pick-up star featured integrated cam-actuated pockets for precise cap handling.
- Caps were transported in an angled position and realigned to be flat at the precise moment of pick-up by the cap chuck.
- This design ensured accurate cap application to the container.



### Results

Our Customer was able to effectively place this sophisticated cap onto the container repeatedly without quality issues at required production speeds of 300 CPM. The Customer was able to utilize existing machines instead of making a large investment into new equipment.

**Quality Issues Eliminated**  
**Capital Expenses Avoided**